

MEDIA CONTACT
VALENTINA
BONAPARTE
detrmedia@detr.nv.gov



JOE LOMBARDO
GOVERNOR

CHRISTOPHER SEWELL
DIRECTOR

DAVID SCHMIDT
CHIEF ECONOMIST

PRESS RELEASE

COUNTIES AND CITIES PRESS RELEASE

For Immediate Release
March 26, 2024

Unemployment rate decreases in February

According to the Nevada Department of Employment, Training and Rehabilitation's ([DETR](#)) February 2024 economic report, the state's seasonally adjusted unemployment rate was 5.2 percent in February 2024 which decreased by 0.1 percent from January 2024. Seasonally adjusted estimates account for regularly seen economic patterns, with the following estimates not seasonally adjusted.

In the three Metropolitan Statistical Areas (MSA), the unemployment rates were 5.2 percent in the Las Vegas area, 4.2 percent in Reno, and 4.8 percent in the Carson area in February 2024.

In Nevada's counties, the lowest unemployment rate was in White Pine County at 3.5 percent, and Nye County had the highest rate at 6.7 percent. For a look at the unemployment rate in your county, visit our [Area Profiles Page](#).

For the latest information on the Nevada economy including employment, unemployment, and unemployment insurance check out our monthly [Labor Market Overview](#), or to see the data on your area, take a look at our monthly [Local Area Labor Market Overview](#).

Additional information on unemployment estimates along with a complete breakout of unemployment in counties, cities, and other areas in Nevada can be found by visiting our [Local Area Unemployment Statistics](#) page. Additionally, employment estimates by industry can be found at our [Current Employment Statistics](#) page.

—###—

ABOUT THE RESEARCH AND ANALYSIS BUREAU:

The [Research and Analysis Bureau](#) is Nevada's premier source for labor market information. A part of DETR, the Bureau is responsible for creating, analyzing, and reporting Nevada's labor market information, in cooperation with the United States Bureau of Labor Statistics (BLS).

500 East Third Street, Room 200 • Carson City, NV 89713 • (775) 684-3911 • Fax (775) 684-3908
2800 E. St. Louis Avenue • Las Vegas, Nevada 89104 • (702) 486-7923
detr.nv.gov



Counties and Cities Employment & Unemployment Overview

February 2024

Published on March 26, 2024

In February 2024, the seasonally adjusted unemployment rate in Nevada decreased by 0.1 percentage points and now sits at 5.2 percent. The unadjusted rate went down by 0.2 percentage points from 5.2 percent to 5 percent. The number of employed individuals in the state went up by around 1,200.

At the MSA (Metropolitan Statistical Area) level, the state saw a decrease in unemployment in two of its MSAs (Las Vegas-Paradise and Reno-Sparks) and an increase in one (Carson City). In the Carson City MSA, the rate increased by 0.1 percentage points from 4.7 percent to 4.8 percent. In the Las Vegas Paradise MSA, the rate decreased by 0.2 percentage points from 5.4 percent to 5.2 percent. Finally, in the Reno-Sparks MSA the rate also decreased by 0.2 percentage points from 4.4 percent to 4.2 percent. These figures are not adjusted for seasonality.

At the county level, the state saw decreases or no change in unemployment in most of its counties. The only exceptions were Esmeralda County, Mineral Country, and Carson City which saw increases in unemployment of 0.6 percentage points, 0.6 percentage points, and 0.1 percentage points, respectively. The county with the largest decrease in unemployment was Lincoln, which saw a decrease equivalent to 0.5 percentage points. After Lincoln, there were 7 counties that were tied with a decrease of 0.2 percentage points.

Figures for state unemployment estimates come from the Local Area Unemployment Statistics (LAUS) program, a state/federal partnership sponsored by the Bureau of Labor Statistics (BLS-LAUS). This program produces monthly and annual employment, unemployment, and labor force data for census regions, states, counties, metropolitan areas, and many large cities, based on place of residence. For more on LAUS data or for a look at estimates in your area visit our [LAUS Page](#), and for a look that the economic profile of Nevada, the metropolitan areas, or your county visit our [Area Profiles](#) Page.

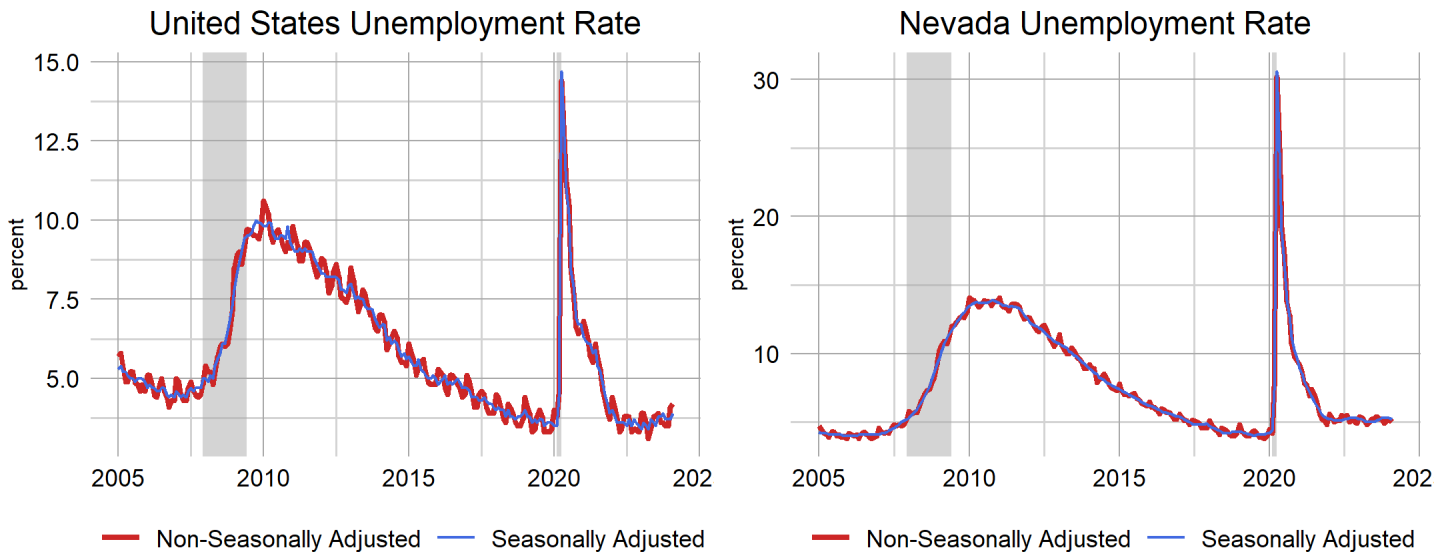
U.S. & Nevada Local Area Unemployment Statistics

Area	Labor Force	Employed	Unemployed	Unemployment Rate	Labor Force Participation Rate	Employment Population Ratio
US						
U.S.	167,285,000	160,315,000	6,970,000	4.2	62.5	59.9
U.S. SA	167,426,000	160,968,000	6,458,000	3.9	62.5	60.1
State						
Nevada	1,617,784	1,536,352	81,432	5.0	62.9	59.7
Nevada SA	1,614,454	1,530,634	83,820	5.2	62.8	59.5

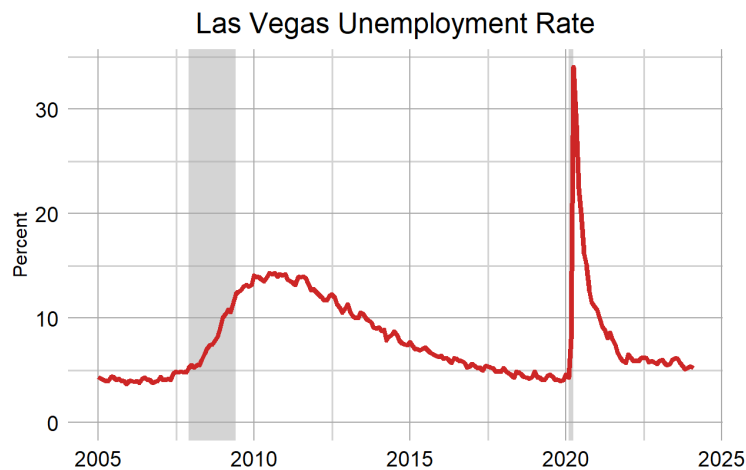
SA denotes seasonally adjusted data

Seasonally adjusted estimates account for regularly seen seasonal employment patterns such as jobs associated with holiday hiring, holiday and weather seasons, or other jobs with seasonal components. The result of a seasonally adjusted estimate is usually a smoother estimate from which underlying economic trends can be seen. Adjusted estimates are in the summary table above, and in many of the other tables and figures throughout this document.

Nevada's seasonally adjusted unemployment rate was 5.2 percent in February, which decreased by 0.1 percentage points from 5.3 percent in January and was unchanged from 5.2 percent in 2023. The number of unemployed individuals decreased by 1,001 from January to a current level of 83,820 people, which increased by 1,878 unemployed people since 2023. The labor force in Nevada is currently 1,614,454 people, which has increased by 234 people from January, and increased by 24,543 people since 2023.

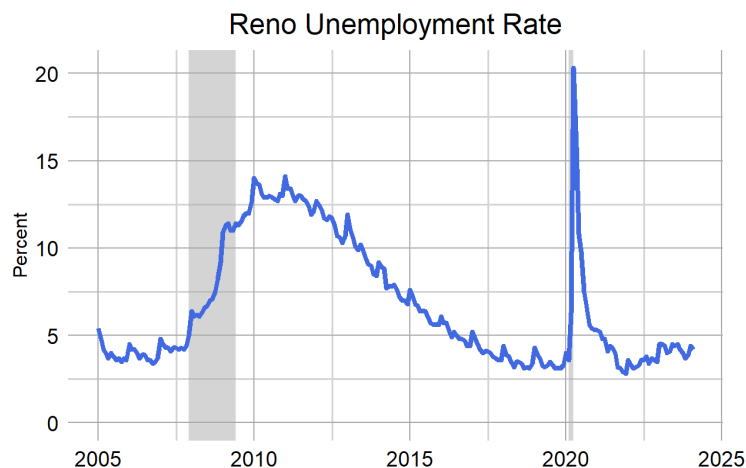


The Las Vegas Metropolitan Statistical Area's (MSA)s unemployment rate was 5.2 percent in February 2024, decreasing from 5.4 percent in January 2024, and down from 6 percent in February 2023, non-seasonally adjusted. The number of unemployed individuals decreased by 2,003 since January 2024 for a current level of 62,744 people, which is 7,214 less unemployed people than February 2023. The labor force in Las Vegas is currently 1,201,452 people, which is 5,357 more people than January 2024, and is up 36,556 people since February 2023.



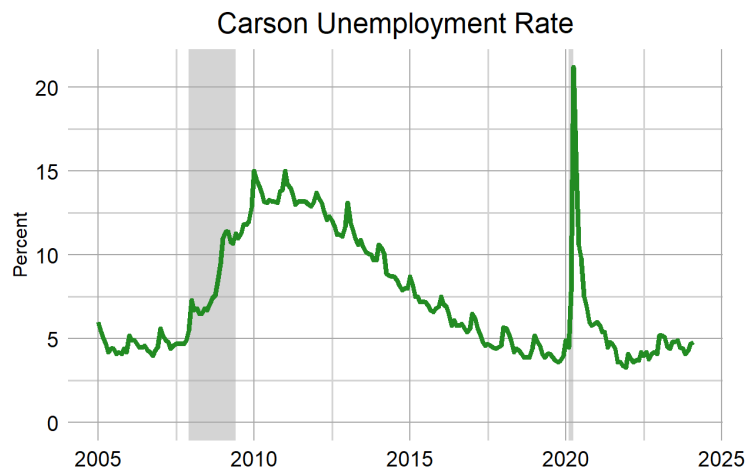
Las Vegas LAUS Summary	
Unemployment Rate	
Unemployment Rate	5.2
Previous Month	5.4
Previous Year	6
Maximum Rate	34
Unemployed Individuals	
Unemployment Level	62,744
Monthly Change	2,003
Annual Change	7,214
Maximum Level	370,113

The Reno MSA's unemployment rate was 4.2 percent in February 2024, decreasing from 4.4 percent in January 2024, and down from 4.5 percent in February 2023, non-seasonally adjusted. The number of unemployed individuals decrease by 279 since January 2024 for a current level of 11,316 people, which is 587 less unemployed people than February 2023. The labor force in Reno is currently 267,230 people, which is 2,996 more people than January 2024, and is up 1,225 people since February 2023.



Reno LAUS Summary	
Unemployment Rate	
Unemployment Rate	4.2
Previous Month	4.4
Previous Year	4.5
Maximum Rate	20.3
Unemployed Individuals	
Unemployment Level	11,316
Monthly Change	279
Annual Change	587
Maximum Level	47,922

The Carson City MSA's unemployment rate was 4.8 percent in February 2024, increasing from 4.7 percent in January 2024, and down from 5.2 percent in February 2023, non-seasonally adjusted. The number of unemployed individuals increased by 35 since January 2024 for a current level of 1,259 people, which is 91 less unemployed people than February 2023. The labor force in Carson City is currently 26,047 people, which is 215 more people than January 2024, and is up 175 people since February 2023.



Carson City LAUS Summary	
Unemployment Rate	
Unemployment Rate	4.8
Previous Month	4.7
Previous Year	5.2
Maximum Rate	21.2
Unemployed Individuals	
Unemployment Level	1,259
Monthly Change	35
Annual Change	91
Maximum Level	5,206

For more on the economy of your county including unemployment, employment, unemployment insurance, wages, and more visit our [Area Profiles Page](#).

Local Area Unemployment Statistics

Area		Labor Force	Employed	Unemployed	Unemployment Rate
US					
U.S.	SA	167,426,000	160,968,000	6,458,000	3.9
U.S.		167,285,000	160,315,000	6,970,000	4.2
State					
Nevada		1,617,784	1,536,352	81,432	5.0
Nevada	SA	1,614,454	1,530,634	83,820	5.2
Metropolitan Statistical Area					
Reno - Sparks MSA		267,230	255,914	11,316	4.2
Carson City MSA		26,047	24,788	1,259	4.8
Las Vegas - Paradise MSA		1,201,452	1,138,708	62,744	5.2
Combined Statistical Area					
Reno-Carson City-Fernley, Nv Combined Statistical Area		339,056	323,949	15,107	4.5
County					
White Pine County		4,559	4,398	161	3.5
Lander County		3,128	3,016	112	3.6
Elko County		25,340	24,394	946	3.7
Humboldt County		7,539	7,249	290	3.8
Churchill County		10,965	10,510	455	4.1
Washoe County		265,072	253,854	11,218	4.2
Eureka County		930	889	41	4.4
Lincoln County		1,948	1,861	87	4.5
Storey County		2,158	2,060	98	4.5
Douglas County		22,509	21,479	1,030	4.6
Carson City		26,047	24,788	1,259	4.8
Clark County		1,201,452	1,138,708	62,744	5.2
Esmeralda County		464	440	24	5.2
Pershing County		2,278	2,156	122	5.4
Lyon County		23,270	21,768	1,502	6.5
Mineral County		1,542	1,438	104	6.7
Nye County		18,584	17,345	1,239	6.7
Labor Market Area					
Elko Micropolitan Area		26,270	25,283	987	3.8
Winnemucca Micropolitan Area		7,539	7,249	290	3.8
Fallon Micropolitan Area		10,965	10,510	455	4.1
Gardnerville Micropolitan Area		22,509	21,479	1,030	4.6
Fernley Micropolitan Area		23,270	21,768	1,502	6.5
Pahrump Micropolitan Area		18,584	17,345	1,239	6.7
City					
Elko City*		9,885	9,514	371	3.8
Sparks		59,490	57,035	2,455	4.1
Mesquite*		8,673	8,302	371	4.3
Reno		144,244	138,072	6,172	4.3
Henderson		177,009	168,460	8,549	4.8
Boulder City*		7,939	7,545	394	5.0
Las Vegas		331,269	313,572	17,697	5.3
North Las Vegas		125,362	117,577	7,785	6.2
Fernley City*		8,788	8,199	589	6.7

*State Specific Areas, not endorsed or published by the BLS

SA denotes seasonally adjusted data

The cities of Boulder City, Elko, Fernley, and Mesquite are state specific areas. These estimates are not endorsed or published by the BLS.

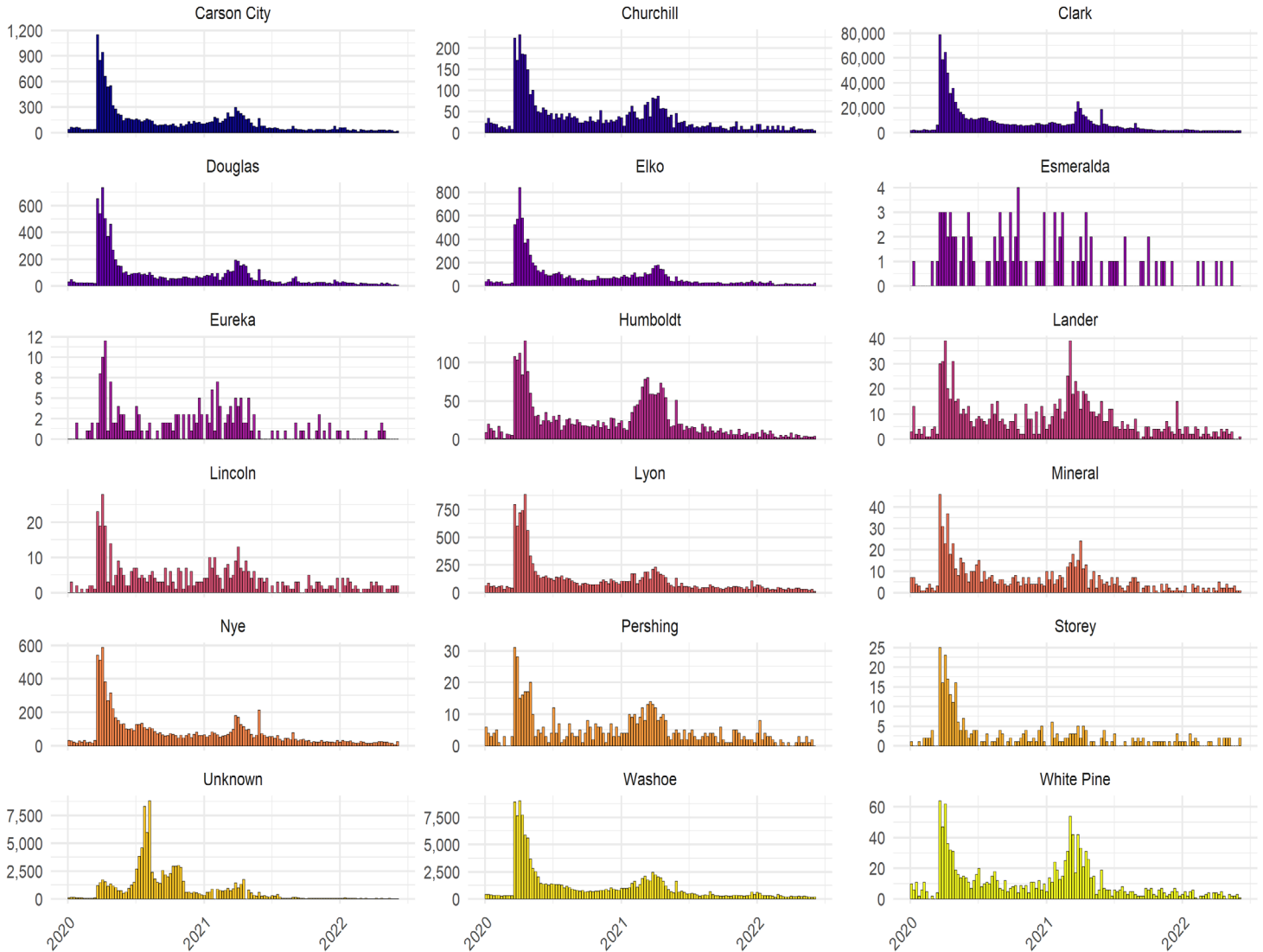
500 East Third Street, Room 200 • Carson City, NV 89713 • (775) 684-3911 • Fax (775) 684-3908
 2800 E. St. Louis Avenue • Las Vegas, Nevada 89104 • (702) 486-7923
detr.nv.gov

Unemployment Insurance Benefits

Turning to our monthly data, in February 2024, 10,928 initial claims for unemployment insurance were filed in Nevada, a decrease of 1,890 claims, or 14.7 percent, from January 2024 when there were 12,818 claims. This figure is an increase from the 9,089 figure that was observed in February of 2023.

Initial Claims by County

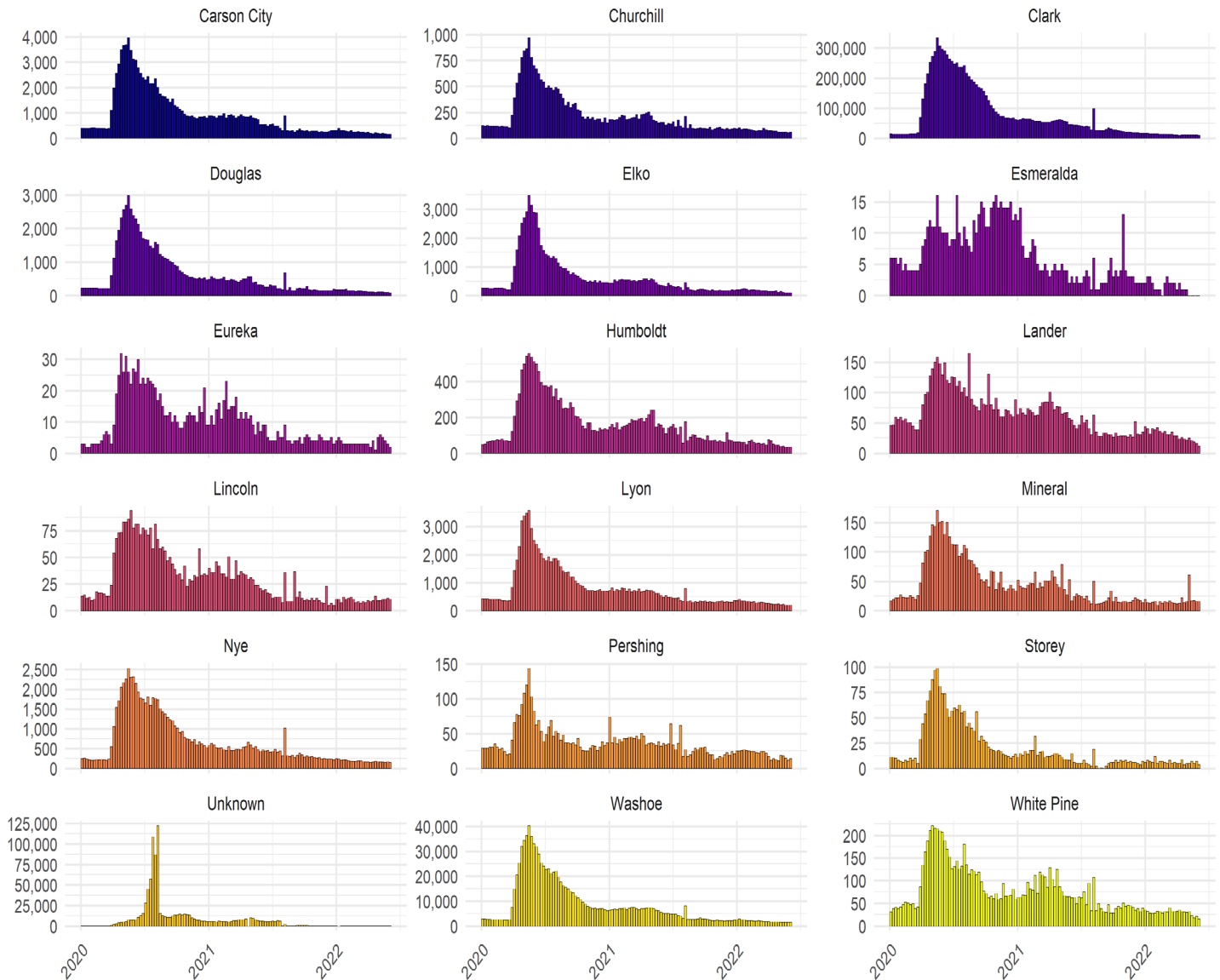
weekly claim totals since January 2020



Source: DETR Internal Reporting

Continued Claims by County

weekly claim totals since January 2020



Source: DETR Internal Reporting
Figure 11

Looking to our measures of unemployment insurance activity, final payments were up across the state. First payments also saw a sizeable increase over the month. In Clark County, for example, first payments increased by 861 up to 5230 or a percentage increase of nearly 19.7%. Final payments increased by 539 up to 2,050, or a percentage increase of nearly 35.7%. Washoe County also saw an increase in first payments, with first payments going up by 695 from 762 to 1,457. Final payments in Washoe County were up by 37, from 178 to 215. Carson City experienced an increase in first payments moving from 94 to 177 or an increase of 83. Final payments in Carson City were up to 17 from 12. Statewide, the Weeks Compensated increased by 24,515 or 30% over the month. Benefit Payments made increased by approximately \$12.42 million or 32.9%.

Unemployment Rate Summary LAUS

Area		February 2024	January 2024	Monthly Change	February 2023	Yearly Change
US						
U.S.	SA	3.9	3.7	0.2	3.6	0.3
U.S.		4.2	4.1	0.1	3.9	0.3
State						
Nevada		5.0	5.2	-0.2	5.3	-0.3
Nevada	SA	5.2	5.3	-0.1	5.2	0.0
Metropolitan Statistical Area						
Reno - Sparks MSA		4.2	4.4	-0.2	4.5	-0.3
Carson City MSA		4.8	4.7	0.1	5.2	-0.4
Las Vegas - Paradise MSA		5.2	5.4	-0.2	6.0	-0.8
Combined Statistical Area						
Reno-Carson City-Fernley, Nv Combined Statistical Area		4.5	4.6	-0.1	4.7	-0.2
County						
White Pine County		3.5	3.5	0.0	3.9	-0.4
Lander County		3.6	3.8	-0.2	4.0	-0.4
Elko County		3.7	3.9	-0.2	4.0	-0.3
Humboldt County		3.8	4.0	-0.2	4.3	-0.5
Churchill County		4.1	4.3	-0.2	4.6	-0.5
Washoe County		4.2	4.4	-0.2	4.5	-0.3
Eureka County		4.4	4.5	-0.1	4.2	0.2
Lincoln County		4.5	5.0	-0.5	5.2	-0.7
Storey County		4.5	4.6	-0.1	4.9	-0.4
Douglas County		4.6	4.8	-0.2	5.2	-0.6
Carson City		4.8	4.7	0.1	5.2	-0.4
Clark County		5.2	5.4	-0.2	6.0	-0.8
Esmeralda County		5.2	4.6	0.6	4.1	1.1
Pershing County		5.4	5.5	-0.1	5.3	0.1
Lyon County		6.5	6.5	0.0	6.6	-0.1
Mineral County		6.7	6.1	0.6	5.8	0.9
Nye County		6.7	6.8	-0.1	6.7	0.0
Labor Market Area						
Elko Micropolitan Area		3.8	3.9	-0.1	4.0	-0.2
Winnemucca Micropolitan Area		3.8	4.0	-0.2	4.3	-0.5
Fallon Micropolitan Area		4.1	4.3	-0.2	4.6	-0.5
Gardnerville Micropolitan Area		4.6	4.8	-0.2	5.2	-0.6
Fernley Micropolitan Area		6.5	6.5	0.0	6.6	-0.1
Pahrump Micropolitan Area		6.7	6.8	-0.1	6.7	0.0
City						
Elko City*		3.8	3.8	0.0	4.1	-0.3
Sparks		4.1	4.2	-0.1	4.3	-0.2
Mesquite*		4.3	4.2	0.1	4.7	-0.4
Reno		4.3	4.4	-0.1	4.5	-0.2
Henderson		4.8	5.0	-0.2	5.5	-0.7
Boulder City*		5.0	4.7	0.3	5.1	-0.1
Las Vegas		5.3	5.5	-0.2	6.2	-0.9
North Las Vegas		6.2	6.4	-0.2	6.9	-0.7
Fernley City*		6.7	6.8	-0.1	6.6	0.1

* State Specific Areas, not endorsed or published by the BLS

SA denotes seasonally adjusted data

Labor Force Levels Summary LAUS

Area	February 2024	January 2024	Monthly Change	February 2023	Yearly Change
US					
U.S.	167,285,000	166,428,000	857,000	166,178,000	1,107,000
U.S. SA	167,426,000	167,276,000	150,000	166,251,000	1,175,000
State					
Nevada	1,617,784	1,608,676	9,108	1,596,803	20,981
Nevada SA	1,614,454	1,614,220	234	1,589,911	24,543
Metropolitan Statistical Area					
Carson City MSA	26,047	25,832	215	25,872	175
Las Vegas - Paradise MSA	1,201,452	1,196,095	5,357	1,164,896	36,556
Reno - Sparks MSA	267,230	264,234	2,996	266,005	1,225
Combined Statistical Area					
Reno-Carson City-Fernley, Nv Combined Statistical Area	339,056	335,511	3,545	338,552	504
County					
Churchill County	10,965	10,911	54	11,084	-119
Clark County	1,201,452	1,196,095	5,357	1,164,896	36,556
Douglas County	22,509	22,334	175	22,669	-160
Elko County	25,340	25,284	56	25,353	-13
Esmeralda County	464	460	4	418	46
Eureka County	930	931	-1	1,054	-124
Humboldt County	7,539	7,522	17	7,787	-248
Lander County	3,128	3,117	11	3,021	107
Lincoln County	1,948	1,953	-5	2,053	-105
Lyon County	23,270	23,111	159	24,006	-736
Mineral County	1,542	1,531	11	2,015	-473
Nye County	18,584	18,518	66	18,060	524
Pershing County	2,278	2,273	5	2,456	-178
Storey County	2,158	2,129	29	2,149	9
Washoe County	265,072	262,105	2,967	263,856	1,216
White Pine County	4,559	4,572	-13	4,432	127
Carson City	26,047	25,832	215	25,872	175
Labor Market Area					
Elko Micropolitan Area	26,270	26,215	55	26,407	-137
Fallon Micropolitan Area	10,965	10,911	54	11,084	-119
Fernley Micropolitan Area	23,270	23,111	159	24,006	-736
Gardnerville Micropolitan Area	22,509	22,334	175	22,669	-160
Pahrump Micropolitan Area	18,584	18,518	66	18,060	524
Winnemucca Micropolitan Area	7,539	7,522	17	7,787	-248
City					
Fernley City*	8,788	8,732	56	9,041	-253
Boulder City*	7,939	7,867	72	7,641	298
Elko City*	9,885	9,858	27	9,897	-12
Henderson	177,009	176,236	773	171,410	5,599
Las Vegas	331,269	329,755	1,514	321,328	9,941
Mesquite*	8,673	8,611	62	8,378	295
North Las Vegas	125,362	124,770	592	121,418	3,944
Reno	144,244	142,592	1,652	143,554	690
Sparks	59,490	58,803	687	59,173	317

* State Specific Areas, not endorsed or published by the BLS

SA denotes seasonally adjusted data

Employed Individuals Levels Summary LAUS

Area	February 2024	January 2024	Monthly Change	February 2023	Yearly Change
US					
U.S.	160,315,000	159,650,000	665,000	159,713,000	602,000
U.S. SA	160,968,000	161,152,000	-184,000	160,315,000	653,000
State					
Nevada	1,536,352	1,524,853	11,499	1,512,598	23,754
Nevada SA	1,530,634	1,529,399	1,235	1,507,969	22,665
Metropolitan Statistical Area					
Carson City MSA	24,788	24,608	180	24,522	266
Las Vegas - Paradise MSA	1,138,708	1,131,348	7,360	1,094,938	43,770
Reno - Sparks MSA	255,914	252,639	3,275	254,102	1,812
Combined Statistical Area					
Reno-Carson City-Fernley, Nv Combined Statistical Area	323,949	320,113	3,836	322,528	1,421
County					
Churchill County	10,510	10,437	73	10,572	-62
Clark County	1,138,708	1,131,348	7,360	1,094,938	43,770
Douglas County	21,479	21,263	216	21,492	-13
Elko County	24,394	24,306	88	24,341	53
Esmeralda County	440	439	1	401	39
Eureka County	889	889	0	1,010	-121
Humboldt County	7,249	7,219	30	7,456	-207
Lander County	3,016	3,000	16	2,901	115
Lincoln County	1,861	1,856	5	1,946	-85
Lyon County	21,768	21,603	165	22,412	-644
Mineral County	1,438	1,437	1	1,899	-461
Nye County	17,345	17,251	94	16,849	496
Pershing County	2,156	2,147	9	2,326	-170
Storey County	2,060	2,031	29	2,043	17
Washoe County	253,854	250,608	3,246	252,059	1,795
White Pine County	4,398	4,412	-14	4,257	141
Carson City	24,788	24,608	180	24,522	266
Labor Market Area					
Elko Micropolitan Area	25,283	25,195	88	25,351	-68
Fallon Micropolitan Area	10,510	10,437	73	10,572	-62
Fernley Micropolitan Area	21,768	21,603	165	22,412	-644
Gardnerville Micropolitan Area	21,479	21,263	216	21,492	-13
Pahrump Micropolitan Area	17,345	17,251	94	16,849	496
Winnemucca Micropolitan Area	7,249	7,219	30	7,456	-207
City					
Fernley City*	8,199	8,137	62	8,442	-243
Boulder City*	7,545	7,496	49	7,255	290
Elko City*	9,514	9,480	34	9,493	21
Henderson	168,460	167,371	1,089	161,985	6,475
Las Vegas	313,572	311,545	2,027	301,519	12,053
Mesquite*	8,302	8,248	54	7,983	319
North Las Vegas	117,577	116,817	760	113,058	4,519
Reno	138,072	136,307	1,765	137,096	976
Sparks	57,035	56,306	729	56,632	403

* State Specific Areas, not endorsed or published by the BLS

SA denotes seasonally adjusted data

Unemployed Individuals Levels Summary LAUS

Area	February 2024	January 2024	Monthly Change	February 2023	Yearly Change
US					
U.S.	6,970,000	6,778,000	192,000	6,465,000	505,000
U.S. SA	6,458,000	6,124,000	334,000	5,936,000	522,000
State					
Nevada	81,432	83,823	-2,391	84,205	-2,773
Nevada SA	83,820	84,821	-1,001	81,942	1,878
Metropolitan Statistical Area					
Carson City MSA	1,259	1,224	35	1,350	-91
Las Vegas - Paradise MSA	62,744	64,747	-2,003	69,958	-7,214
Reno - Sparks MSA	11,316	11,595	-279	11,903	-587
Combined Statistical Area					
Reno-Carson City-Fernley, Nv Combined Statistical Area	15,107	15,398	-291	16,024	-917
County					
Churchill County	455	474	-19	512	-57
Clark County	62,744	64,747	-2,003	69,958	-7,214
Douglas County	1,030	1,071	-41	1,177	-147
Elko County	946	978	-32	1,012	-66
Esmeralda County	24	21	3	17	7
Eureka County	41	42	-1	44	-3
Humboldt County	290	303	-13	331	-41
Lander County	112	117	-5	120	-8
Lincoln County	87	97	-10	107	-20
Lyon County	1,502	1,508	-6	1,594	-92
Mineral County	104	94	10	116	-12
Nye County	1,239	1,267	-28	1,211	28
Pershing County	122	126	-4	130	-8
Storey County	98	98	0	106	-8
Washoe County	11,218	11,497	-279	11,797	-579
White Pine County	161	160	1	175	-14
Carson City	1,259	1,224	35	1,350	-91
Labor Market Area					
Elko Micropolitan Area	987	1,020	-33	1,056	-69
Fallon Micropolitan Area	455	474	-19	512	-57
Fernley Micropolitan Area	1,502	1,508	-6	1,594	-92
Gardnerville Micropolitan Area	1,030	1,071	-41	1,177	-147
Pahrump Micropolitan Area	1,239	1,267	-28	1,211	28
Winnemucca Micropolitan Area	290	303	-13	331	-41
City					
Fernley City*	589	595	-6	599	-10
Boulder City*	394	371	23	386	8
Elko City*	371	378	-7	404	-33
Henderson	8,549	8,865	-316	9,425	-876
Las Vegas	17,697	18,210	-513	19,809	-2,112
Mesquite*	371	363	8	395	-24
North Las Vegas	7,785	7,953	-168	8,360	-575
Reno	6,172	6,285	-113	6,458	-286
Sparks	2,455	2,497	-42	2,541	-86

* State Specific Areas, not endorsed or published by the BLS

SA denotes seasonally adjusted data

End Notes

Prepared by the Research and Analysis Bureau with contributions from: Jordan Ambrose, Bharman Gulati, Marianne Kattenhorn, Dionny McDonnell, Dave Schmidt, Antonio Solorio, and Tim Wilcox.

Special thanks to all the R and RStudio developers that built the packages to make this possible. Packages used in this report include tidyverse, DBI, tidyquant, data.table, scales, gt, kableExtra, ggthemes, cowplot, gridExtra, RcppRoll, viridis, fiftystater, ggforce, knitr, flexdashboard, lubridate, plotly, patchwork, reshape2.

This workforce product was funded by the Workforce Information Grant awarded by the U.S. Department of Labor's Employment and Training Administration. The product was created by the recipient and does not necessarily reflect the official position of the U.S. Department of Labor. The U.S. Department of Labor makes no guarantees, warranties, or assurances of any kind, express or implied, with respect to such information, including any information on linked sites and including, but not limited to, accuracy of the information or its completeness, timeliness, usefulness, adequacy, continued availability, or ownership. This product is copyrighted by the institution that created it. Internal use by an organization and/or personal use by an individual for non-commercial purposes is permissible. All other uses require the prior authorization of the copyright owner.